

Navigating the Intersection of Student Health & Education

December 2025 | Adrianna Bravo, MD FAAP



About Inspire Health For Education

We are part of a healthcare organization with 30+ years of experience delivering custom healthcare programs to diverse clients in sectors such as IT, outpatient services, corporate health, and school-based care.

Diverse range of clients include: Cherokee Nation, Providence Health, Disney, Fortune 100 companies and Schools

We Know Schools & School Health!

- Decades of experience working in and with K–12 schools:
Los Angeles Unified School District, Fairfax County Public Schools
- Deep understanding of school administration, health staff, students, and families
- Innovative, efficient programs designed by seasoned health professionals
- Committed to high-standard clinical care and professionalism
- Skilled in strategy, design, operations, and management of school health services
- Client-focused with strong service delivery
- Ensure culturally competent, accessible care for all.



About Dr. Bravo



Chief Medical Officer of Inspire Health for Education

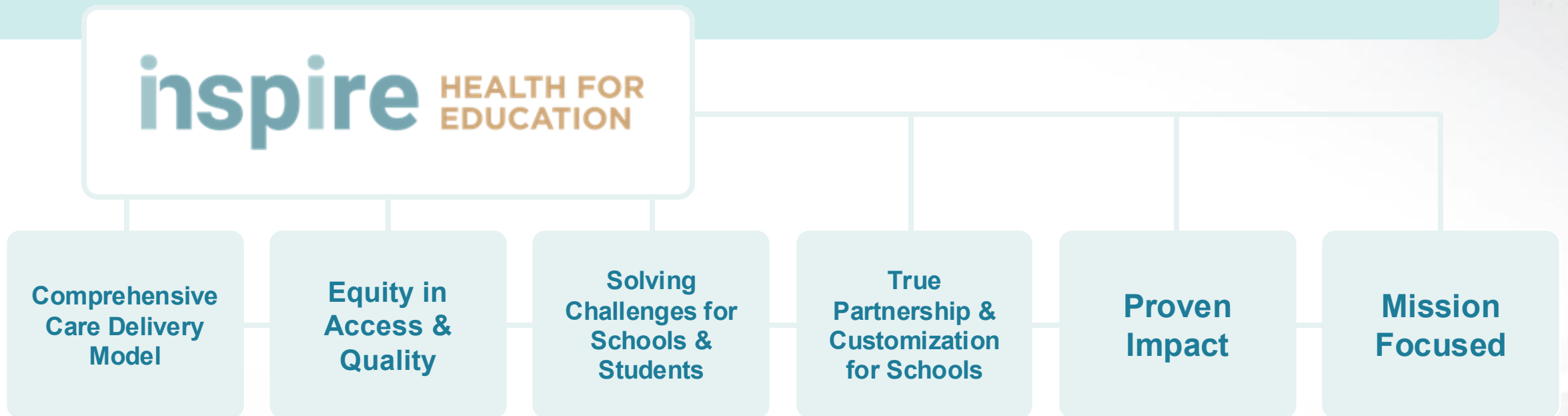
A leading clinician, thought leader and consultant for school-based healthcare throughout the US.

Board Certified Pediatrician, Fellow of the American Academy of Pediatrics, School Based Health Care Advisor and Consultant, School Health & Wellness Consultant. Obtained BA from Dartmouth College, MD from Dartmouth Medical School with Post Doctoral Training at Johns Hopkins Hospital Department of Pediatrics in Baltimore, MD.

Overview

Inspire Health for Education is delivering to schools a transformational approach to navigating this difficult intersection of student health and the K-12 educational environment.

Inspire's comprehensive model for school-based healthcare, inclusive of full-scope medical and mental telehealth services, is re-defining the approach to student health & wellbeing, and solving challenges faced by schools.



Our Mission



Equalize Access

to high-quality,
convenient
healthcare for
all students



Reduce School Absenteeism

and increase
in-school, in-
person learning
time for all
students



Address Resource Shortages

to support
school health
offices & staff



Promote Wellbeing

for all students
and employees by
supporting health,
wellness and illness
prevention

Student Health & Engagement

Students who are experiencing well-being and feel engaged
are much more likely to attend school and achieve academically.

**Physical Health
Impacts
Attendance**

**Chronic Health
Conditions Affects
Achievement**

**Compounding
Factors**

**Studies &
Surveys Show**

**Current
Drivers**

**Youth Mental
Health Crisis**

Student Health & Chronic Absenteeism

Student Health is an important cause of the stubbornly elevated chronic absenteeism rates in schools across the country.

Chronic absenteeism impacts academics, social-emotional growth, executive functioning, risk taking behaviors, graduation rates, long term health outcomes



National Trend:

Rates nearly doubled during COVID
(16% → ~30%)



Colorado:

Peaked at 35.5%
(2021–22),
slow decline, but
28.4% in 23–24 SY

Goal:

Colorado Dept. of Ed
aims to cut absenteeism
50% by 26–27 SY

Student Health & Access to Care

Volume and complexity of student health needs is evolving & expanding while **convenient, reliable, equitable, affordable, accessible, quality** healthcare is not.

**Shortage of
Professionals**

**Geographic
Disparities**

**Social
Determinants
of Health**

**High &
Unexpected
Costs of Care**

**Insurance
Complexity**

**Coverage
Gaps**



Impact to Students and Schools

Growing student health challenges coupled with declining access to care has profound impact on students and schools.

For Students

This means declining:

- Student Attendance
- Engagement
- Achievement
- Wellbeing
- Ability to Thrive

For Schools

Challenges include:

- Workforce Shortages
- Resource Gaps
- Staff Strain & Burnout
- Declining Community Wellbeing



The Solution:

Centering Student Healthcare in Schools

As schools, districts, states and communities seek to address the attendance crisis, they should consider the positive impact of school-based health services on student engagement and attendance.

**Equalize
Access**

**Reduce
Absenteeism
& Stigma**

**Overcome
Barriers**



The Value of School-Based Health Services

The **health and wellbeing of children is of paramount importance** for school leadership and communities. Yet, **the student health considerations are increasingly complex** for schools and districts:

Burden of growing volume of visits to school health office

Challenge of staffing school health professionals to meet demand

Increasing complexity of student health needs

Difficulty of ensuring equitable access to care

Challenge of meeting care standards across diverse socioeconomics

Budget constraints limiting resource availability

Inspire School Health directly supports the health and well-being of youth and schools.
Inspire School Health positively impacts everyone in the school community:

Secures

Student health, wellness and wellbeing

Sustains

School counselor's and nurse's passion, engagement and productivity;
They feel empowered to serve students in ways they otherwise could not

Supports

School principals in reducing absenteeism rates; Principals and school leadership demonstrate quick and measurable results

Showcases

District and community leadership commitment to youth health and wellbeing

Proving the Impact of School-Based Healthcare



**Access to
Professionals**



Telehealth



**Infection
Prevention**



**School Based
Health Centers**



Partnerships

inspire
HEALTH FOR EDUCATION



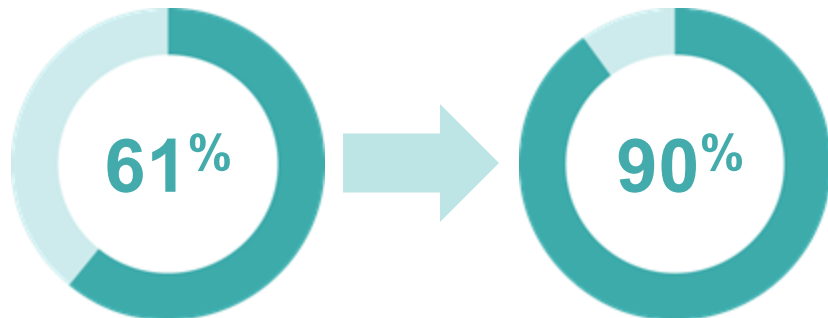
Proving the Impact of School-Based Healthcare, *Continued*

The Inspire - LAUSD partnership

Pilot year quickly showed return-to-class rates rose from 61% → 90%

Year 2 expanded to 230+ schools

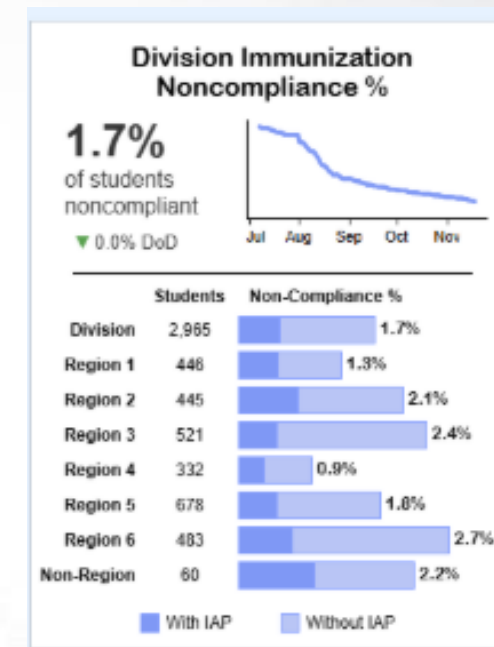
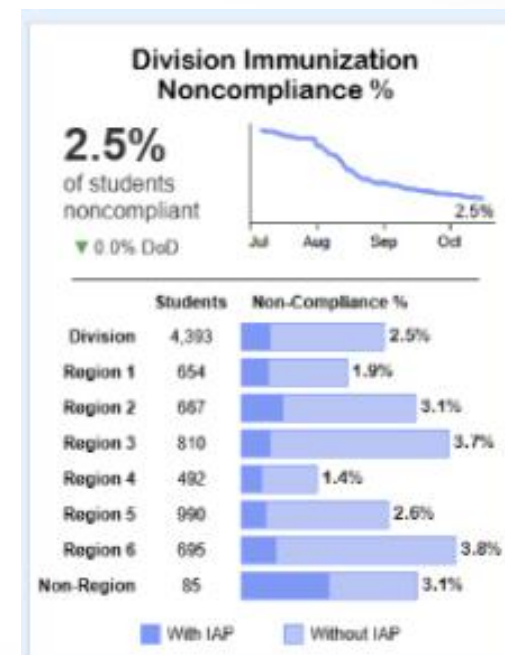
Year 3 expanding to 400 schools, 400 K students



The Inspire - FCPS partnership

Quick timeline to implementation & launch
Student and Employee Vaccination Program.

Resources and scheduling targeted to non compliant students, available to all



Inspire's Comprehensive Solution for School-Based Healthcare

- Mission Focused
- Designed by School Health Experts who are Acutely Aware of Challenges
- Turnkey, Comprehensive, Broad Scope Model / Ecosystem
- Telehealth Technology at the Core, Onsite & Student Accessible Resources at the Ready
- Medical and Mental Health Care Services
- Sustainable
- Delivers Measurable Impact
- Strengthens Individual Students, Strengthens School Communities
- Customizable and Scalable Licensed, Credentialed Pediatric & Adolescent Providers



Increased access to
health services



Reduced barriers and
disparities to care



Strengthened prevention,
early identification and
intervention



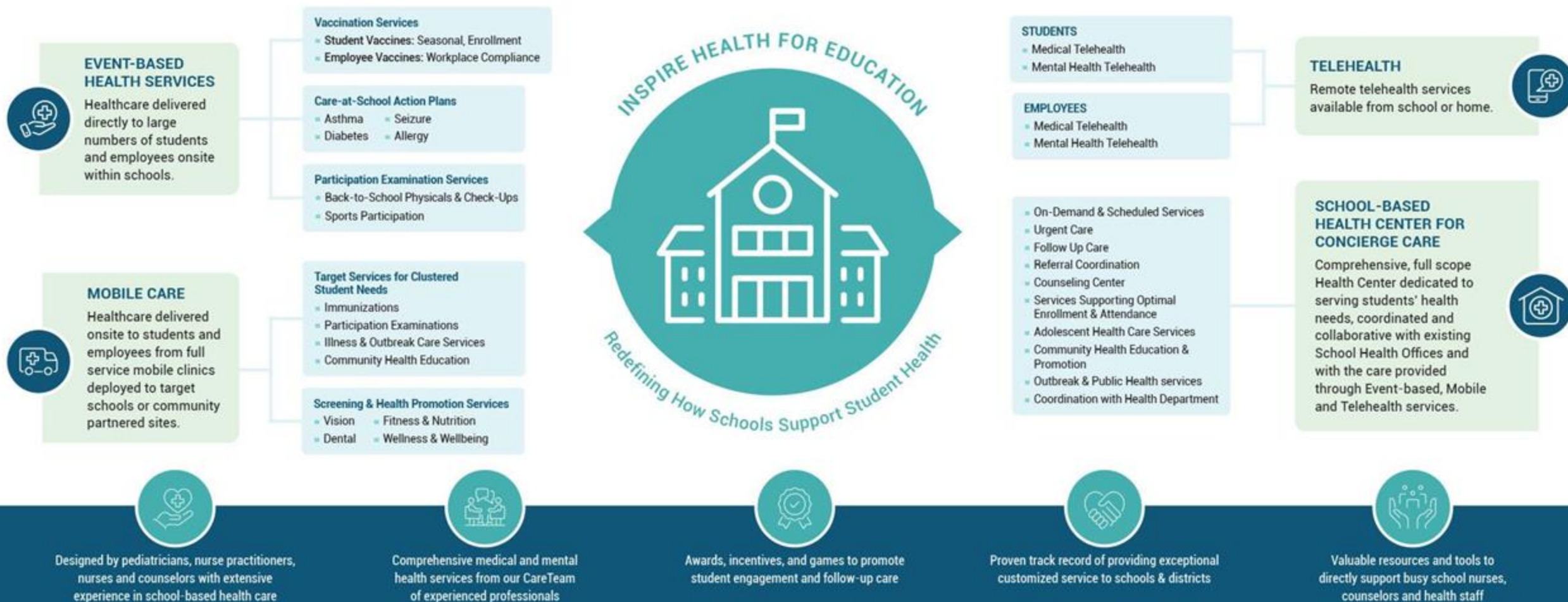
Improved School
Attendance



Enhanced academic
and health outcomes

Reimagining Student Health & Wellbeing

Model For Comprehensive School-Based Health Services



HEALTH TECH PLATFORM

Secure ■ HIPAA compliant ■ Integrated ■ Interoperable ■ Customizable ■ Device-Agnostic Accessible ■ User-Friendly ■ Full Scope Services Telehealth ■ Appointments & Scheduling ■ Consents ■ Electronic Health Records Forms ■ Completion & Submission ■ Billing & Claims Management ■ Communications & Messaging ■ Event Management ■ Administrator Dashboards ■ Online Wellness Center ■ Digital Engagement Tools

TELEHEALTH TECHNOLOGY AT THE CORE OF THE INSPIRE MODEL

The U.S. healthcare system is undergoing a profound shift.
The Healthcare Landscape is evolving toward Telemedicine.

**Episodic Reactive Care
being Replaced by Focus on
Preventive, Maintenance and
Continuous Access Care**

**Telemedicine
Now a Primary
Channel**

**Policy &
Funding Support**

**Schools are
Logical, Efficient, Ideal Place
to Drive Care**

**Allows for Earlier
Intervention which Leads to
Improved Outcomes**



Features of Our Services & Program



Designed by pediatricians, nurse practitioners and counselors with extensive experience in school-based healthcare



User-friendly integrated telehealth platform accessible to parents, students, and staff, from any device



comprehensive medical and mental health services from our CareTeam of experienced professionals



Awards, incentives, and games to promote student engagement and follow-up care



Operational excellence, featuring scalable, compliant, and high-quality healthcare delivery



Easy access consent and scheduling for on-demand or appointment services



valuable resources and tools to directly support busy school nurses, counselors and health staff



Access to our online wellness center, with customizable health education and life skills resources



Proven track record of providing exceptional customized service to schools & districts



All services use HIPAA-compliant systems, ensuring privacy while seamlessly integrating with school, Medicaid, and EHR platforms



Cloud-based infrastructure enables rapid statewide expansion with standardized protocols and continuous quality monitoring

PREVIEW: Physical / Medical Health Telehealth Services

Simple 3-Step Process

1

Hard copy or E-consent via QR code or Single Sign on to school site.

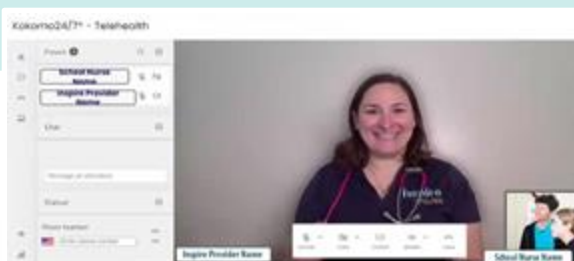
Processed & Verified



2

School Nurse provided with **Telehealth Tablet Device** and **fully stocked CareBox** with OTC supplies.

Encounters initiated from school nurse office. Student seen on demand by doctor or nurse practitioner.



3

School Nurse administers recommended medications from CareBox

Parent/Guardian receives **Visit Summary** via email.



PREVIEW: Mental Health Telehealth Services

Inspire offers a comprehensive menu of counseling services to augment the work of the school counseling staff:



Easy & convenient access to:

- Consents
- Scheduling for Same Day/Urgent and Routine/Scheduled visits
- Triage Support



Initial Assessment

Short term solution focused counseling

Ongoing weekly Counseling

Mental Health Advocacy



Psychotherapy

Crisis Intervention

Substance Use Screening, Supports & Interventions

Behavioral Health Intervention

Case Management & Referral Support

PREVIEW: Mobile Services & School-Wide Events

Inspire collaborates with schools to design and run efficient events, featuring digital registration, simple consent, insurance billing, parent communication, and user-friendly scheduling.



Mobile Immunization / Vaccination Services

Inspire provides turnkey, equitable immunization services for students and staff, reducing non-compliance and enrollment barriers.



Mobile Back-to-School Examinations

- Fast Pass Physicals/ School Entrance Examinations
- Asthma and Diabetes Action Plan Events
- Sports Clearance Examinations



Collaboration with school health vendors such as mobile vision & dental



PREVIEW: Targeted Partnerships & Integrations

Inspire eases school burdens through exclusive partnerships and seamless integrations, distinguishing itself as the market leader in school-based health.

- **Software for Outbreak Prevention & Response:**
 - Illness tracking
 - Contact tracing
 - Vaccination tracking

- **Partnership and integration with experts in government funded reimbursement resources for school based health**, providing end to end facilitation to optimize school funding, including provider registration, student insurance data collection, claims submission and reimbursement.



PREVIEW: Medicaid Support of School-Based Health Services



Medicaid Expansion

Colorado is one of several states with an approved plan to reimburse for school-based services for all Medicaid-enrolled students, including nursing.



Covered Services

- Medication administration, monitoring
- Individual nursing treatment
- Individualized health education
- Personal care of health (e.g. diabetic care)



Key Parameters

- School staff are enrolled providers
- LEAs bill Medicaid under own number
- Qualified third party providers eligible
- Reimbursement used to enhance student health (nursing support, supplies, mental health, vision/dental vouchers).
- Inspire-supported program administration

Sustainability Grounded in the Inspire Mission



Our goal is to provide healthcare services without regard to a student's ability to pay.

Ensuring
EQUITY IN ACCESS
is part of our mission.



We accept **commercial insurance**

We accept **Medicaid** / government insurance

We work with Districts to **design sustainable paths** to cover students in need

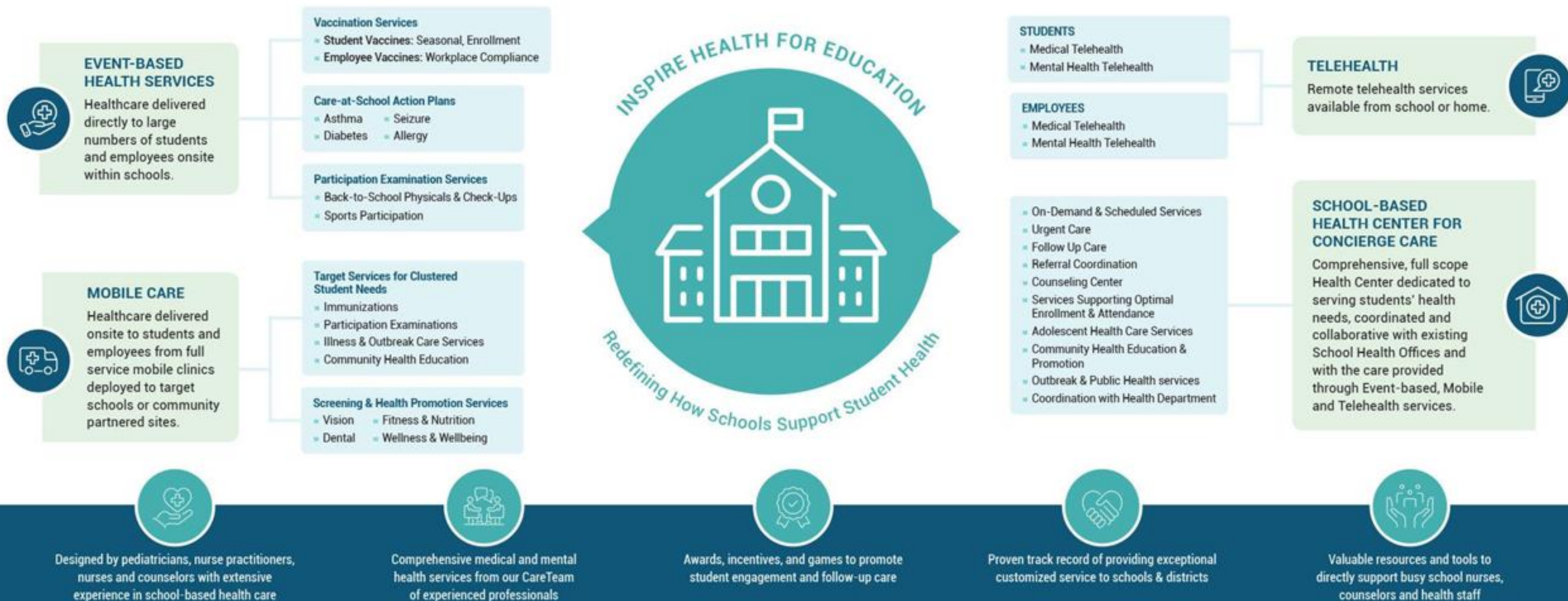


We seek additional funding sources, such as **Vaccines for Children**

We seek grants and partnerships with **non-profit and charitable organizations.**

Reimagining Student Health & Wellbeing

Model For Comprehensive School-Based Health Services



HEALTH TECH PLATFORM

Secure ■ HIPAA compliant ■ Integrated ■ Interoperable ■ Customizable ■ Device-Agnostic Accessible ■ User-Friendly ■ Full Scope Services Telehealth ■ Appointments & Scheduling ■ Consents ■ Electronic Health Records Forms ■ Completion & Submission ■ Billing & Claims Management ■ Communications & Messaging ■ Event Management ■ Administrator Dashboards ■ Online Wellness Center ■ Digital Engagement Tools

inspire HEALTH FOR EDUCATION

21 Orchard Road, Lake Forest, CA 92630

www.inspirehealthforeducation.com