



DECEMBER 12, 2025

***LEADING COMPLEX SCHOOL FINANCE TO SUPPORT
THE VISION AND FUTURE OF YOUR COMMUNITY***

TODAY'S PANELISTS



Greg Porter

Moderator
Hollis + Miller



Brett Ridgway

Chief Business Officer
Lewis Palmer School District 38



Brad Geiger

Board of Education - Director
Douglas County School District



Dr. Rex Core

Legacy Campus Director
Douglas County School District





AGENDA

- 01. Traditional Funding Sources
- 02. New Funding Sources
- 03. Role of Partnerships
- 04. Q+A





LEWIS PALMER CAREER AND INNOVATION CENTER



DCSD LEGACY CAMPUS



 **HIGHLANDS RANCH AUTOMOTIVE CTE**



DOUGLAS COUNTY HIGHSCHOOL COSMETOLOGY



BOND FUNDING



COP FUNDING



Community Engagement

Voices, finite options and feelings



Primary stakeholders

Process meetings,
Group exercises, 1:1 interviews

Secondary stakeholders

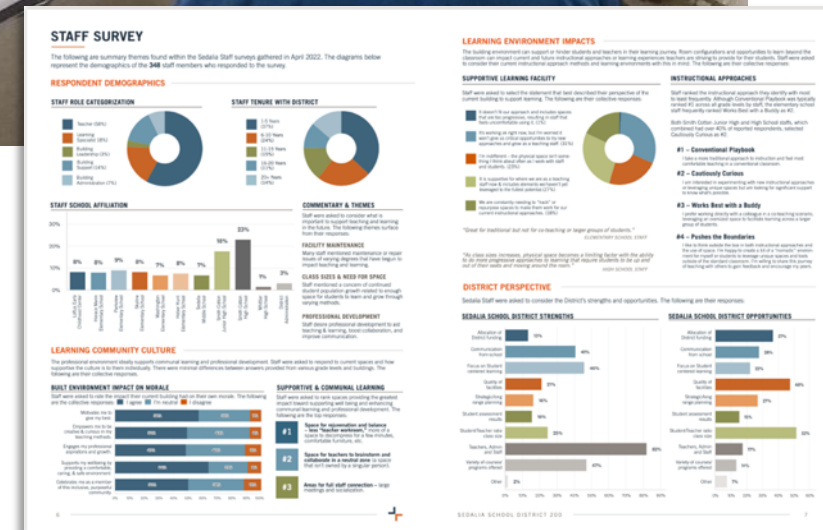
Targeted meeting attendance
Group interviews, surveys

Near community

Engagement sessions, surveys

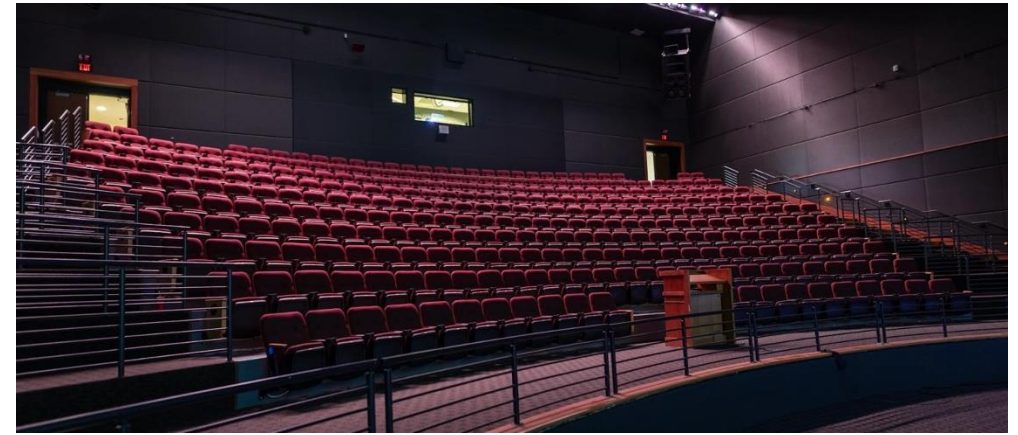
Broader community

Surveys, publications, fundraising
Engagement sessions, approvals





PARTNERSHIPS



ALTERNATIVE REVENUE SOURCES

Q + A

THANK YOU
